

Anthelion Systems, Inc.

Nano DAC Smart Card

The next generation of low cost, high performance, data acquisition products are now available from Anthelion Systems. The Nano series will solve your company's cost and performance dilemmas.

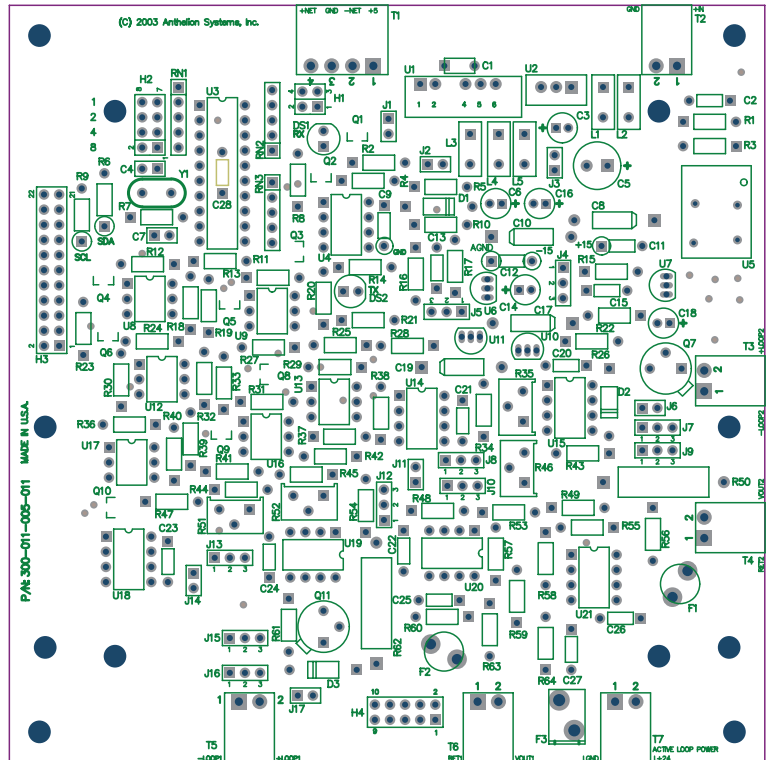
Our "smart" devices utilize the latest technology in Micro controllers. They provide a great balance between price and performance. The cards were designed to withstand harsh environments with the result being outstanding durability, reliability and accuracy. They utilize the standard ModBus binary protocols for communication to allow for their data to be retrieved by standard off the shelf Data Acquisition Software.

The Nano Series Digital to Analog Controller card is a smart subsystems with 2 output channels, 16 bits each. Each channel can be configured independently as a current (4-20 mA) output or a voltage (0-5, 0-10 VDC) output. All points are fuse protected and optically isolated. The card has 4 user programmable shunts to set the card's address (0 to 15).

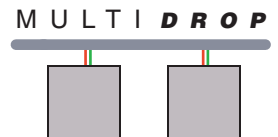
Other Features:

- Watch Dog timer
- Size: 4" X 4"
- Brown Out monitoring.
- Low power consumption
- System clock up to 20 Mhz
- RS485 with on board termination and optional Transmit and Receive LED's.

LOW COST HIGH PERFORMANCE DISTRIBUTED SYSTEM SOLUTION.



Operating Temperature Range: -20 to 70° C
System Power Requirement: +6 to +12 VDC



Anthelion Systems, Inc.



1718 Fry Rd., Suite 420
Houston, Texas 77084
Voice: 281-698-8031
www.anthelion.com
support@anthelion.com