

Anthelion Systems, Inc.

Nano Status Input Smart Card

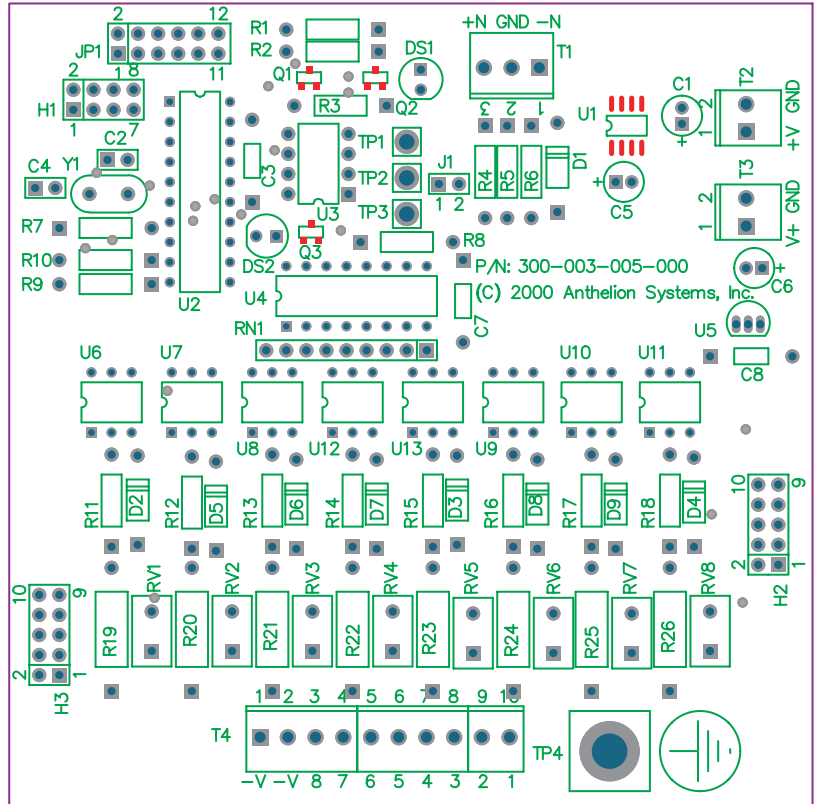
The next generation of low cost, high performance, data acquisition products are now available from Anthelion Systems. The Nano series will solve your companies cost and performance dilemmas.

Our "smart" devices utilize the latest technology in Micro controllers. They provide a great balance between price and performance. The cards were designed to withstand harsh environments with the result being outstanding durability, reliability and accuracy. They utilize the standard ModBus binary protocols for communication to allow for their data to be retrieved by standard off the shelf Data Acquisition Software.

The Nano series Status card is a smart subsystem, with 8 Optically Isolated inputs and an on board microprocessor that reads data continuously. The power to the status ports for user wiring is supplied from an on board power source.

The Nano card is a ModBus device with a RS485 port for all communication to the card. The controller card has an on board Watchdog Timer, Brown Out protection, and it is low power and high performance.

A low power industrial PC is also available to scan the controller cards and archive the data based upon user configuration. Please contact Anthelion Systems for a solution to fit your company's growing needs.



Actual Size

Operating temperature: -20 to 70° C

Size: 4" X 4"

Power: +6 to 12 VDC @ 67 ma. Reverse Protected.

Communication: 2 wire RS485.

Status Inputs: 8 Optically Isolated, with on board Power Source.



LOW COST HIGH PERFORMANCE DISTRIBUTED SYSTEM SOLUTION.

Anthelion Systems, Inc.



1718 Fry Rd., Suite 420
Houston, Texas 77084
Voice: 281-698-8031
www.anthelion.com
support@anthelion.com