

Anthelion Systems, Inc.

Nano 2 X 16 LCD Display

The next generation of low cost, high performance, data acquisition products are now available from Anthelion Systems. The Nano series will solve your company's cost and performance dilemmas.

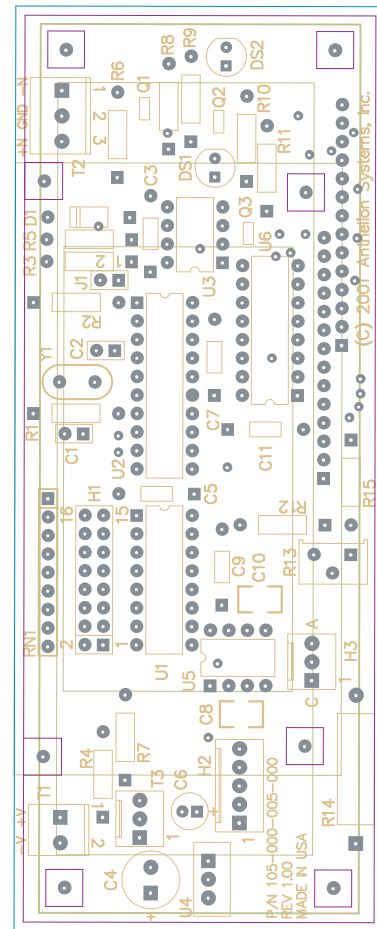
The Nano series LCD display card is a smart subsystem with 2 lines of 16 characters each.

The microprocessor processes the incoming request. If there is new data to be displayed, the Nano series will display it. The LCD card can handle addresses from 1 to 128.

Our "smart" devices utilize the latest technology in Micro controllers. They provide a great balance between price and performance. The cards were designed to withstand harsh environments with the result being outstanding durability, reliability and accuracy. They utilize the standard ModBus binary protocols for communication and to allow for their data to be retrieved by standard off the shelf Data Acquisition Software.

The Nano card is a ModBus device, with an RS485 port for communication to the card. The controller card has an on board Watchdog Timer, Brown Out protection, this system is low power and high performance.

A low power industrial PC is also available to scan the controller cards and archive the data based upon user configuration. Please contact Anthelion Systems for a solution to fit your company's growing needs.



Operating temperature: -20 to 70° C

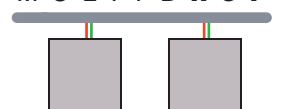
Size: 2" X 5"

Power: +6 to 24 VDC. Reverse Protected.

Communication: 2 wire RS485.

LCD: Extended Temperature.

MULTIDROP



LOW COST HIGH PERFORMANCE DISTRIBUTED SYSTEM SOLUTION.

Anthelion Systems, Inc.



1718 Fry Rd., Suite 420

Houston, Texas 77042

Voice: 281-698-8031

www.anthelion.com

support@anthelion.com